



12 Rogers Street Beachmere QLD

3 2 9

Rare Opportunity on Rogers Street!

Set on a generous 4,400 m² block, this stunning residence features three bedrooms and two modern bathrooms, with upgrades at every turn. Relax in the comfort of ducted air conditioning and beautiful polished timber floors situated only 3 mins to the foreshore.

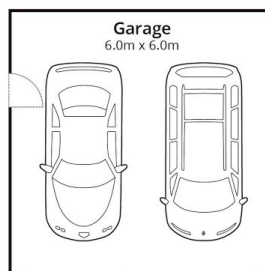
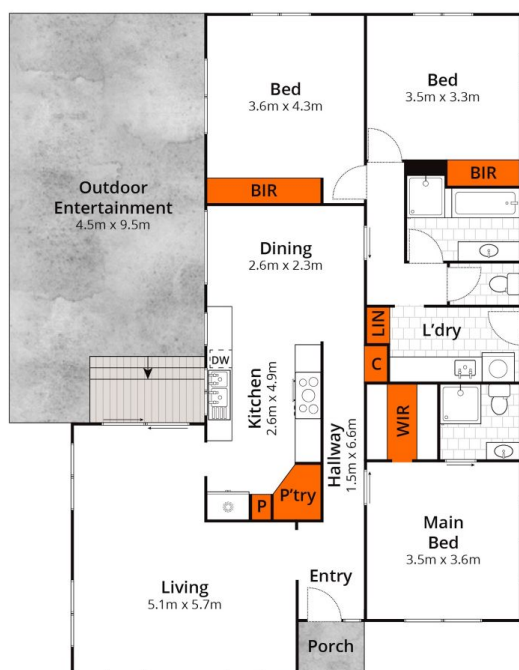
The newly built 12m x 12m shed giving you ample space for all your weekend hobbies. Parking for two additional vehicles, complete with drive-through access. Explore the possibilities with a detached 6m x 6m brick shed, ideal for a studio, extra workspace, shed offers high entry doors, 3-phase power, a 13kW solar system, and secure gated access, ensuring a lifestyle of convenience and endless

Type : Acreage/Semi-Rural
Price : New Listing!
Land Size : 4400 sqm
View : <https://www.movementrealty.com.au/sale/ql/redcliffe-bribie-caboolture/beachmere/residential/acreagesemirural/8174224>

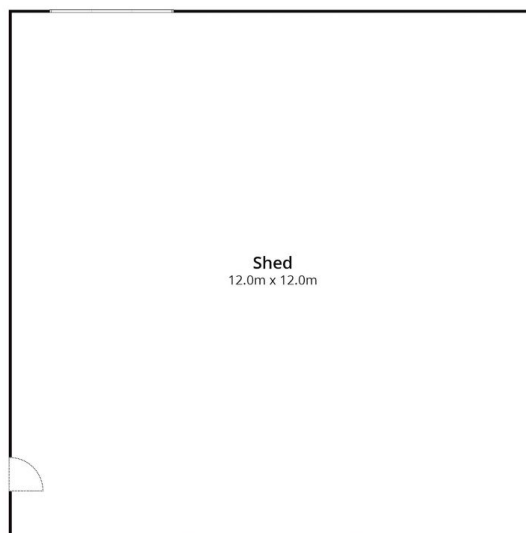


Adam Charlton
0408909957

[For full version visit the website](https://www.movementrealty.com.au)



(Not In Position)



(Not In Position)

Whilst **bwrn.com.au** has made every attempt to ensure the accuracy of the floor plan contained here, measurements are approximate and no responsibility is taken for any error, omission, or mis-statement. This plan is for illustrative purposes only.

12 Roger Street, Beachmere

MOVEMENT
REALTY