



1/16 Lanita Chase Morayfield QLD

4 2 1

Welcome to your ideal home (duplex) in the vibrant Morayfield area! This well-maintained residence, built in 2012, combines modern design with timeless charm. It's an excellent option for first home buyers and offers great investment potential, making it a smart choice for anyone looking to enter the market. With easy access to shops, schools, and parks, this property is perfect for families and professionals alike.

Features:

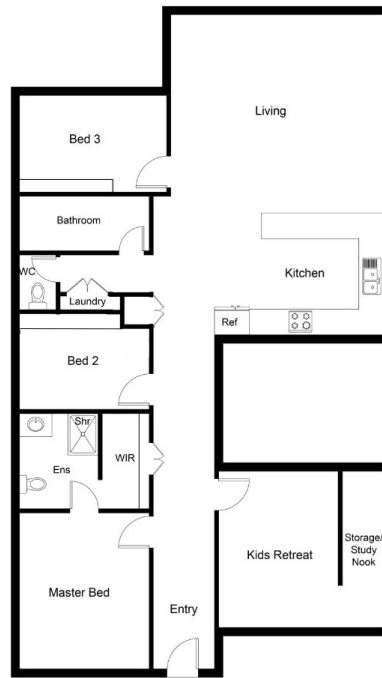
- Three generous bedrooms
- Master bedroom complete with ensuite and walk-in wardrobe
- Garage converted into a 4th bedroom or second living with a study nook, fan and electrical upgrades + isolator

[For full version visit the website](https://www.movementrealty.com.au/sale/ql/redcliffe-bribie-caboolture/morayfield/residential/semi-detached/8173826)

Type : Semi Detached
Price : NEW LISTING
Land Size : 132 sqm
View : <https://www.movementrealty.com.au/sale/ql/redcliffe-bribie-caboolture/morayfield/residential/semi-detached/8173826>



Adam Cini and Tiffany Warren
0497807087



FLOOR PLAN

This floor plan including furniture, fixture measurements and dimensions are approximate and for illustrative purposes only.
BoxBrownie.com gives no guarantee, warranty or representation as to the accuracy and layout.
All enquiries must be directed to the agent, vendor or party representing this floor plan.

1-16 Lanita Chase, Morayfield