



**10 Bechly Street Kilcoy QLD**

6 2 2

DEMI LOW IS PROUD TO PRESENT 10 BECHLY STREET, KILCOY.

Discover this exceptional brick home, offering a harmonious balance of space, style, and convenience. Positioned on the edge of town, it's the perfect retreat for families seeking a peaceful lifestyle with easy access to all essentials.

Kilcoy boasts picturesque rural landscapes and a welcoming community. Whether exploring nearby national parks, enjoying local cafes, or soaking in the serene surroundings, this location has something for everyone.

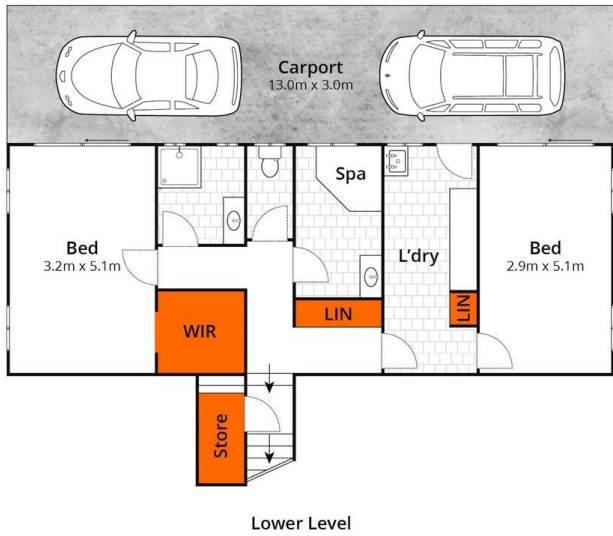
PROPERTY HIGHLIGHTS:

[For full version visit the website](#)

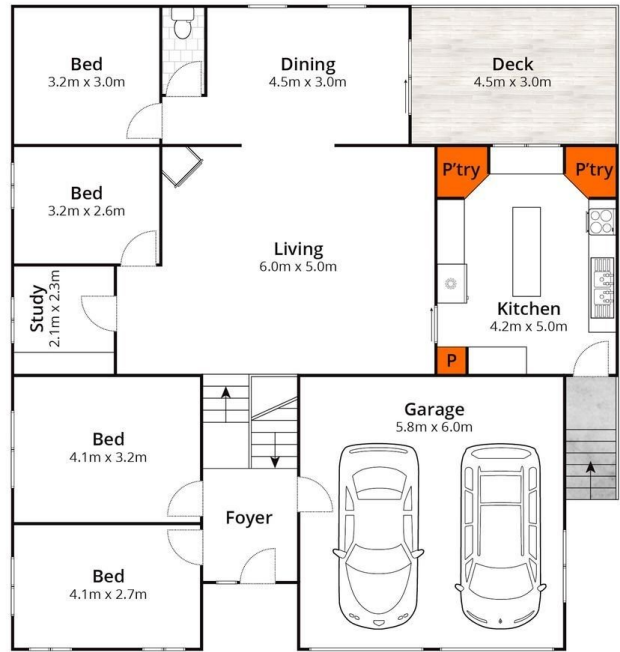
**Type** : House  
**Price** : ACCEPTING ALL OFFERS  
**Land Size** : 8350 sqm  
**View** : <https://www.movementrealty.com.au/sale/ql/south/kilcoy/residential/house/8130706>



**Demi Low**  
**0412944941**



Lower Level



Upper Level

Approx House Area 237m<sup>2</sup>

Whilst [bwrn.com.au](http://bwrn.com.au) has made every attempt to ensure the accuracy of the floor plan contained here, measurements are approximate and no responsibility is taken for any error, omission, or mis-statement. This plan is for illustrative purposes only.

**10 Bechly Street, Kilcoy**

**MOVEMENT**  
REALTY