



38 Florence Street Burpengary East Queensland

4 3 2

Are you searching for a brand-new property without the build time? Look no further! This stunning Hamptons inspired 391.75sqm home at 38 Florence Street, Burpengary East, is ready for you to move in and start living your dream life.

As you step inside, the impressive design immediately catches your eye. Starting with:

Ground Floor:

- Grand Entrance: As you enter the home, you're greeted by the impressive design of 2550mm high ceilings and elegant vinyl flooring throughout the lower floor.
- Spacious Study: Perfect for a home office or quiet reading area.

[For full version visit the website](https://www.movementrealty.com.au/sale/queensland/-/burpengary-east/residential/house/8068670)

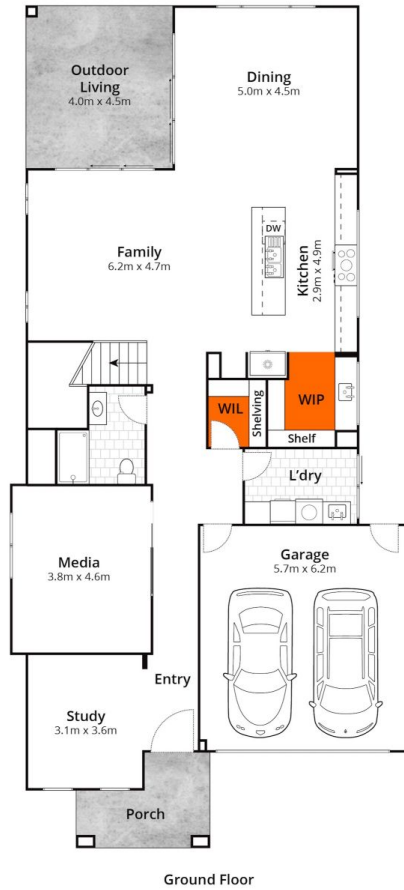
Type : House
Price : \$ 1,175,000
Building Size : 391.75 sqm
Land Size : 481 sqm
View : <https://www.movementrealty.com.au/sale/queensland/-/burpengary-east/residential/house/8068670>



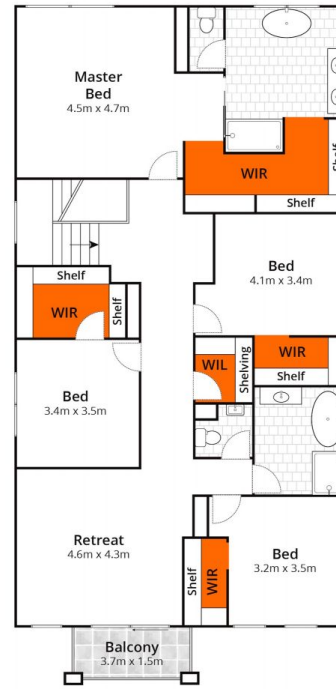
Adam Cini
0754958994



Tiffany Warren
0411497764



Ground Floor



First Floor

Approx House Area 360m²

Whilst bwrn.com.au has made every attempt to ensure the accuracy of the floor plan contained here, measurements are approximate and no responsibility is taken for any error, omission, or mis-statement. This plan is for illustrative purposes only.

38 Florence Street, Burpengary East

MOVEMENT
REALTY